



## Pioneer® brand Maize Silage hybrid performance information

### Silage CRM 83

#### Highly productive mid-maturity option.

**P8333** is a tall bulky plant with a long grain filled ear, supported by strong all-round agronomics, superior drought tolerance and staygreen.

- Delivers top silage yields for maturity, with impressive energy and digestibility.
- While earlier than **P8666** it has similar in-paddock appearance.
- An important mid-maturity option between **P8086** and **P8666**
- **P8333** is a tall leafy plant, so optimum established populations should be approximately 5,000 per hectare less than applied for **P8086**.

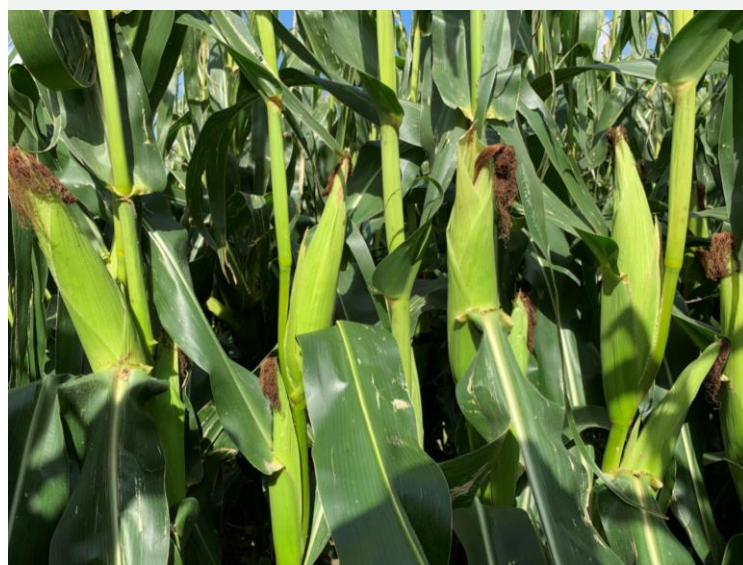
Yields particularly well in the South Island and in the cooler regions of the Lower North Island where this maturity is required.

#### Recommended growing regions



#### Recommended established plant populations (000's/ha)

Challenging yield environments	Medium yield environments	High yield environments
100	110	115



#### Plant traits

Drought tolerance	7
Stalk strength	6
Root strength	5
Early growth	8
Plant height	7
Staygreen	8

#### Silage quality traits

Whole plant digestibility	7
Starch and sugar	8

#### Hybrid disease ratings

Northern Leaf Blight	5
Common Rust	6

## Maize Silage Performance Comparisons for P8333

Yield advantage to the first named hybrid

Pioneer hybrid	Comparison hybrid	Number of trials	Drymatter difference (%) <sup>1</sup>	Yield advantage (kgDM/ha)	Statistical significance
<b>National</b>					
<b>P8333</b>	PAC007 (Booster)	25	1.30	1,543	★★
<b>P8333</b>	P8000	110	-2.21	1,929	★★★★
<b>P8333</b>	P8086	25	0.39	838	CA
<b>P8333</b>	P8240	68	1.13	-414	NS
<b>P8333</b>	P8532	32	3.60	-2,967	★★★★
<b>P8333</b>	P8666	119	1.41	-774	★★★★
<b>P8333</b>	P8711	38	4.48	-1,244	★★
<b>P8333</b>	Titus	39	-0.34	5,396	★★★★
<b>South Island</b>					
<b>P8333</b>	P8000	49	-1.51	1,912	★★★★
<b>P8333</b>	P8086	12	-1.12	1,238	CA
<b>P8333</b>	P8240	28	0.42	335	NS
<b>P8333</b>	P8532	11	1.21	-2,412	★
<b>P8333</b>	P8666	43	0.96	-436	NS
<b>P8333</b>	P8711	11	2.84	-80	NS
<b>P8333</b>	Titus	18	-1.73	5,611	★★★★
<b>Lower North Island &amp; Taranaki</b>					
<b>P8333</b>	P8000	59	-2.77	2,080	★★★★
<b>P8333</b>	P8086	13	1.79	468	NS
<b>P8333</b>	P8240	26	1.84	-1,038	★
<b>P8333</b>	P8500	13	3.95	-2,697	★★
<b>P8333</b>	P8666	50	1.55	-836	★
<b>P8333</b>	P8086	11	4.42	-691	NS
<b>P8333</b>	Titus	21	0.85	5,213	★★★★

### Yield significance key

NS No significant yield difference  
CA Commercially acceptable  
★ Significant yield advantage

★★ Highly significant yield advantage  
★★★★ Very highly significant yield advantage

<sup>1</sup> Positive drymatter differences indicate that the bolded Pioneer hybrid had a higher average drymatter percentage at harvest. Such hybrids are usually shorter in maturity than the comparison hybrid. Negative drymatter differences indicate that the bolded Pioneer hybrid had a lower average drymatter content at harvest. Such hybrids are usually longer in maturity than the comparison hybrid. Positive yield advantages indicate that the bolded hybrid was higher yielding.

Source: Pioneer® brand products New Zealand Research Programme. Includes all data to the end of the 2023 harvest.



For further information contact:

Your Area Manager  
or visit [www.pioneer.nz](http://www.pioneer.nz)  
March 2024



**PIONEER**  
BRAND · PRODUCTS