



Pioneer® brand Maize Grain hybrid performance information

Grain CRM 100

Hard to beat consistency.

Produces an eye-catching cob on plants with sound standability and staygreen, bundled together with top disease resistances.

- A relatively short plant that is most productive in moderate to high yield environments.
- A well-known mid-maturity hybrid in the north and a full-maturity option in the Lower North Island.

Companion with **P9650, P9978, P0200** or **P0362** depending on agronomic and maturity requirements.

Recommended growing regions



Recommended established plant populations (000's/ha)

Challenging
yield
environments

85

Medium
yield
environments

95

High
yield
environments

100



Plant and agronomic traits

| | | |
|-------------------|------------------------|---|
| Drought tolerance | <div><div></div></div> | 7 |
| Stalk strength | <div><div></div></div> | 6 |
| Root strength | <div><div></div></div> | 7 |
| Early growth | <div><div></div></div> | 9 |
| Staygreen | <div><div></div></div> | 7 |
| Husk cover | <div><div></div></div> | 6 |
| Grain drydown | <div><div></div></div> | 6 |

Grain quality traits

| | | |
|------------------|------------------------|---|
| Grain appearance | <div><div></div></div> | 5 |
| Test weight | <div><div></div></div> | 6 |

Hybrid disease ratings

| | | |
|----------------------|------------------------|---|
| Northern Leaf Blight | <div><div></div></div> | 7 |
| Common Rust | <div><div></div></div> | 6 |

Maize Grain Performance Comparisons for P0021

Yield/test weight advantage to the first named hybrid

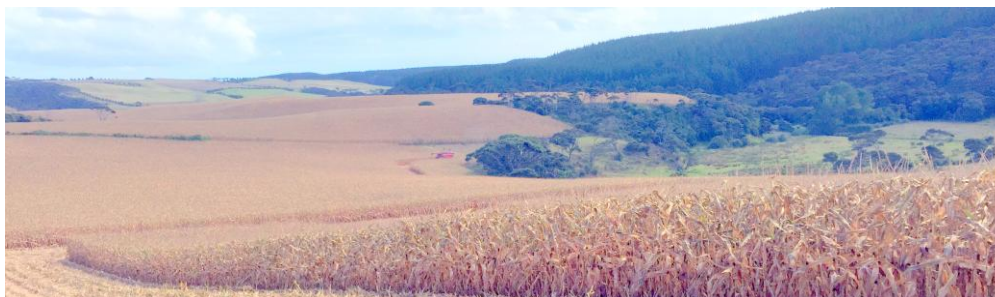
| Pioneer hybrid | Comparison hybrid | Number of trials | Harvest moisture difference (%) ¹ | Grain yield advantage(kgDM/ha) | Statistical significance | Test weight difference (kg/hl) |
|---|-------------------|------------------|--|--------------------------------|--------------------------|--------------------------------|
| Northland | | | | | | |
| P0021 | P0200 | 25 | 0.78 | -139 | NS | 0.85 |
| P0021 | P0362 | 45 | 0.89 | -327 | CA | 0.37 |
| P0021 | P0640 | 49 | 1.31 | -622 | ★ | 2.96 |
| P0021 | P9400 | 100 | -1.33 | 793 | ★★★ | -0.49 |
| P0021 | P9978 | 24 | 0.41 | -151 | NS | 3.13 |
| Waikato | | | | | | |
| P0021 | P0200 | 79 | 0.70 | -220 | NS | 0.46 |
| P0021 | P0362 | 105 | 1.41 | -639 | ★★★ | 0.28 |
| P0021 | P9400 | 178 | -1.10 | 477 | ★★★ | -1.64 |
| P0021 | P9650 | 27 | 0.05 | -363 | CA | -1.30 |
| P0021 | P9978 | 80 | 0.41 | -1,102 | ★★★ | 1.94 |
| Bay of Plenty Gisborne & Hawke's Bay | | | | | | |
| P0021 | P0200 | 51 | 0.35 | -572 | ★★ | 0.03 |
| P0021 | P0362 | 79 | 1.22 | -429 | ★★ | 0.17 |
| P0021 | P0640 | 115 | 1.11 | -660 | ★★★ | 2.79 |
| P0021 | P9400 | 91 | -1.02 | 982 | ★★★ | -1.45 |
| P0021 | P9650 | 8 | 0.02 | -705 | ★ | -1.40 |
| P0021 | P9721 | 94 | -0.48 | 79 | NS | 1.64 |
| P0021 | P9978 | 57 | 0.36 | -1,138 | ★★★ | 2.17 |
| Lower North Island | | | | | | |
| P0021 | P0200 | 69 | 0.64 | 28 | NS | 0.76 |
| P0021 | P0362 | 119 | 1.69 | -490 | ★★★ | 0.53 |
| P0021 | P0547 | 214 | 0.38 | -385 | ★★★ | -0.15 |
| P0021 | P9400 | 218 | -1.43 | 781 | ★★★ | -1.42 |
| P0021 | P9650 | 17 | 0.01 | 377 | NS | -0.47 |
| P0021 | P9721 | 249 | -0.96 | 83 | NS | 1.70 |
| P0021 | P9978 | 90 | 0.74 | -912 | ★★★ | 1.90 |

Yield significance Key

NS No significant yield difference
 CA Commercially acceptable
 ★ Significant yield advantage

★★ Highly significant yield advantage
 ★★★ Very highly significant yield advantage

¹ Positive harvest moisture differences indicate that the bolded Pioneer hybrid had a lower average moisture percentage at harvest than the comparison hybrid. Such hybrids are usually earlier in maturity or faster to drydown than the comparison hybrid. Negative moisture differences indicate that the bolded Pioneer hybrid had a higher average moisture percentage at harvest. Such hybrids are usually later in maturity or slower to drydown than the comparison hybrid. Positive yield and / or test weight differences indicate the bolded Pioneer hybrid had higher yield and / or grain test weight. Source: Pioneer® brand products New Zealand Research Programme. **Includes all data to the end of the 2024 harvest.**



For further information contact:
Your Area Manager
 or visit www.pioneer.nz
 March 2025



PIONEER®
 BRAND · PRODUCTS