

NEW



Pioneer® brand Maize Grain hybrid performance information

Grain CRM 111

Foliar health champion with next generation yields.

A widely adapted, defensive hybrid delivering industry leading yields of high test weight grain.

- The standout performer in trials for Northern Leaf Blight and Rust resistances, staygreen and season long plant health.
- Erect leaves, low ear placement, notable standability and is higher yielding than **P0937**.
- Based on prior seasons observations in some crops, under certain growing conditions, **P1185** may produce ears showing some scattered kernel set.

Plant from Kaitaia to Napier as a companion to **P0900** and **P0937**, particularly where there has been significant Northern Leaf Blight pressure in recent seasons.

Recommended growing regions



Recommended established plant populations (000's/ha)

Challenging
yield
environments

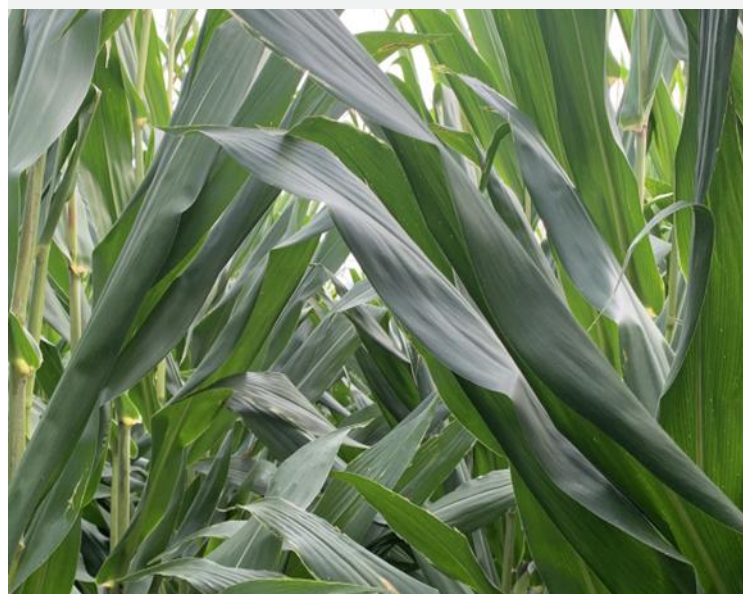
80

Medium
yield
environments

90

High
yield
environments

100



Plant and agronomic traits

Drought tolerance	7
Stalk strength	8
Root strength	7
Early growth	7
Staygreen	9
Husk cover	6
Grain drydown	6

Grain quality traits

Grain appearance	8
Test weight	7

Hybrid disease ratings

Northern Leaf Blight	8
Common Rust	8

Maize Grain Performance Comparisons for P1185

Yield/test weight advantage to the first named hybrid

Pioneer hybrid	Comparison hybrid	Number of trials	Harvest moisture difference (%) ¹	Grain yield advantage(kgDM/ha)	Statistical significance	Test weight difference (kg/hl)
National						
P1185	P0891	32	-1.07	871	★★★	-2.76
P1185	P0900	108	-0.29	785	★★★	2.03
P1185	P0937	110	-0.48	433	★★	3.15
P1185	P1253	27	-0.47	902	★	-1.96
Waikato						
P1185	P0891	20	-1.26	939	★★	-2.83
P1185	P0900	42	-0.31	977	★★	2.36
P1185	P0937	43	-0.65	772	★★	3.47
Bay of Plenty Gisborne & Hawke's Bay						
P1185	P0891	12	-0.75	756	CA	-2.66
P1185	P0900	34	-0.39	971	★★★	2.29
P1185	P0937	35	-0.62	692	★	3.54
P1185	P1253	15	-0.47	1,439	★	-2.10
P1185	P1315	9	1.14	1,408	CA	-1.76
P1185	P1613	8	0.84	1,590	★	-2.45
P1185	P1837	9	1.49	1,676	★★	-0.34

Yield significance Key

NS No significant yield difference
CA Commercially acceptable
★ Significant yield advantage

★★ Highly significant yield advantage
★★★ Very highly significant yield advantage

¹ Positive harvest moisture differences indicate that the bolded Pioneer hybrid had a lower average moisture percentage at harvest than the comparison hybrid. Such hybrids are usually earlier in maturity or faster to drydown than the comparison hybrid. Negative moisture differences indicate that the bolded Pioneer hybrid had a higher average moisture percentage at harvest. Such hybrids are usually later in maturity or slower to drydown than the comparison hybrid. Positive yield and / or test weight differences indicate the bolded Pioneer hybrid had higher yield and / or grain test weight.

Source: Pioneer® brand products New Zealand Research Programme. Includes all data to the end of the 2024 harvest.



For further information contact:
Your Area Manager
or visit www.pioneer.nz
March 2025



PIONEER®
BRAND · PRODUCTS