

NEW



Pioneer® brand Maize Silage hybrid performance information



Silage CRM 107

Exceptional foliar health and yield stability – wet or dry!

AQUAmax® drought qualities provide tolerance to water and heat stress during flowering and grain fill stages.

- Starts well with strong stress emergence and early growth.
- Superior staygreen, and Northern Leaf Blight resistance deliver season long plant health.
- Relatively short plant with low ear placement, strong roots and stalks.
- Similar yield performance to **P0900** and **P0937** but has higher energy and digestibility ratings..

An excellent new option to plant alongside **P0640**, **P0900** and **P0937**.



Recommended growing regions



Recommended established plant populations (000's/ha)

Challenging yield environments	Medium yield environments	High yield environments
90	100	115

Plant traits

Drought tolerance		9
Stalk strength		7
Root strength		7
Early growth		8
Plant height		6
Staygreen		8

Silage quality traits

Whole plant digestibility		8
Starch and sugar		8

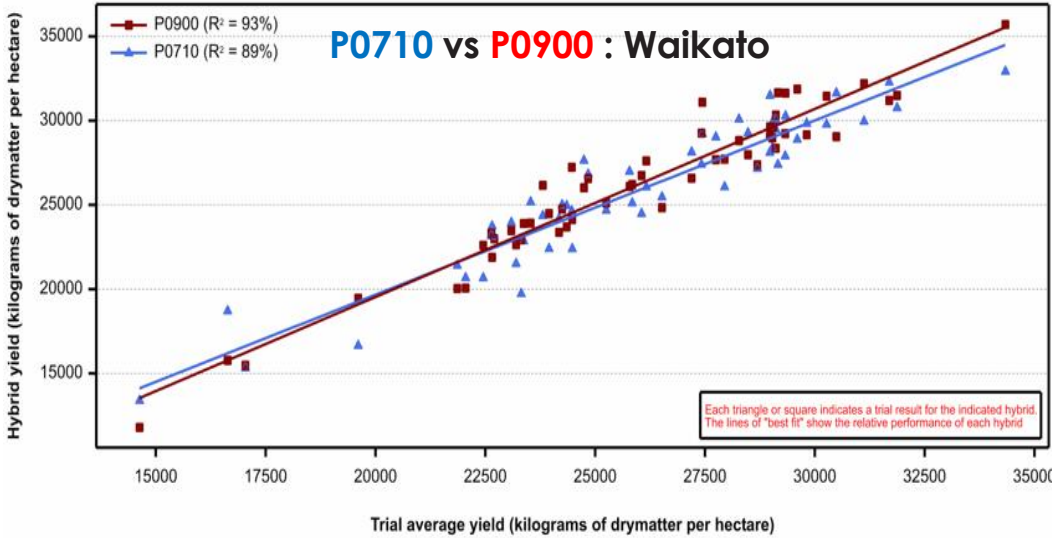
Hybrid disease ratings

Northern Leaf Blight		7
Common Rust		7

Maize Silage Performance Comparisons for P0710

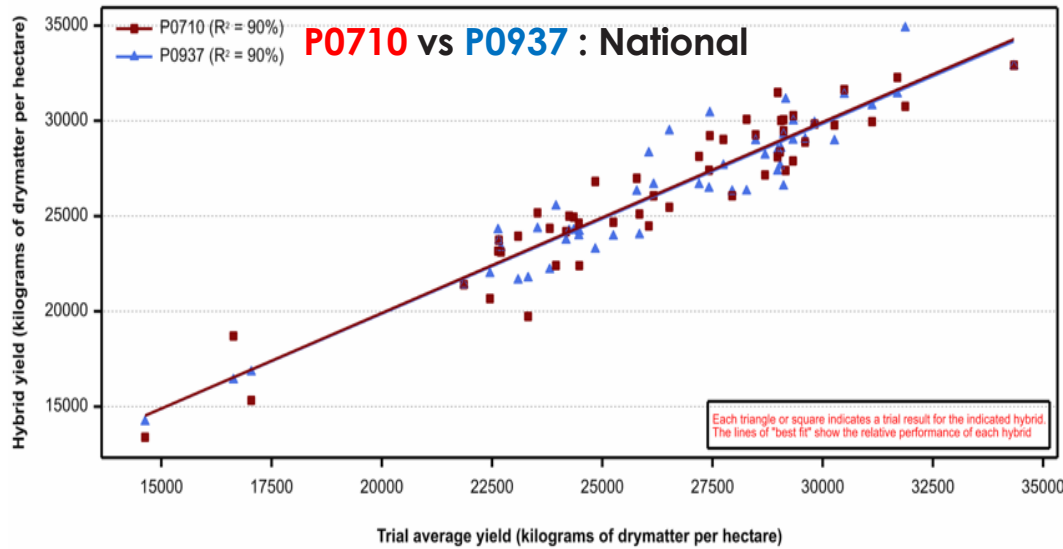
Yield advantage to the first named hybrid

Pioneer hybrid	Comparison hybrid	Number of trials	Drymatter difference (%) ¹	Yield advantage (kgDM/ha)	Statistical significance
National					
P0710	P0900	66	1.17	-320	NS
P0710	P0937	52	2.29	55	NS



Yield significance Key

- NS No significant yield difference
- CA Commercially acceptable
- ★ Significant yield advantage
- ★★ Highly significant yield advantage
- ★★★ Very highly significant yield advantage



¹ Positive drymatter differences indicate that the bolded Pioneer hybrid had a higher average drymatter percentage at harvest. Such hybrids are usually shorter in maturity than the comparison hybrid. Negative drymatter differences indicate that the bolded Pioneer hybrid had a lower average drymatter content at harvest. Such hybrids are usually longer in maturity than the comparison hybrid. Positive yield advantages indicate that the bolded hybrid was higher yielding. Source: Pioneer® brand products New Zealand Research Programme. **Includes all data to the end of the 2025 harvest.**



For further information contact:
 Your Area Manager
 Or visit www.pioneer.nz
 March 2026



PIONEER
 BRAND · PRODUCTS